



Screwed-in fastener with metal pin and short expansion zone

WKTherm S-8

ø8

Modern fastener with short expansion zone for fastening of polystyrene EPS foam and mineral wool MW (in combination with TDX support collar) on all substrates according to EAD 330196-01-0604, in ETICS systems.



ETA-13/0724



TX-40



SUBSTRATES (EAD 330196-01-0604 ABCDE)



Concrete



Solid clay bricks
MZ, Calcium silicate solid brick KS



Hollow bricks

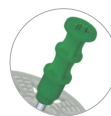


Elements on LAC
lightweight aggregate concrete



Autoclaved aerated concrete AAC

FASTENER MATERIAL	Polyethylene (PE)
PIN MATERIAL	Carbon steel
HEAD MATERIAL	Polyamide (PA) with glass fiber
INSTALLATION METHOD	<ul style="list-style-type: none"> · Surface mount · Immersed mount
FASTENER TYPE	Screwed-in
APPLICATION	Universal screwed-in fastener for all substrates
TYPE OF INSULATION MATERIAL	<ul style="list-style-type: none"> · Polystyrene EPS, Polystyrene XPS · Mineral wool MW



METAL PIN'S HEAD SEALED IN PLASTIC

Very low point thermal transmittance (0.002 W/K) enhances the heat transfer coefficient of the whole barrier and additionally protects the pin against corrosion.



SCREW-IN FIXING, TX-40

Screw-driven fastener recommended for use in soft materials to avoid damaging of the substrate with a hammer. Screw-driven pin guarantees achieving best strength parameters and facilitates flush fitting of the fastener with the insulation material. These fasteners are real time-savers.



INNOVATIVE DESIGN OF THE FASTENER

Large amount of pocket adhesives on the collar increases the adhesiveness of the mortar. Greater stiffness of the collar means better holding power of the material fixture



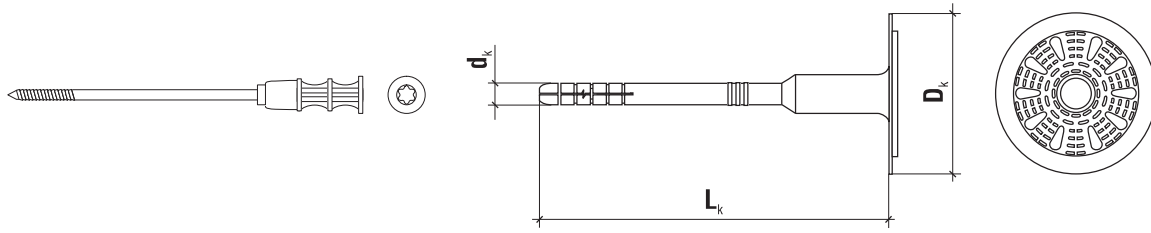
SHORT EXPANSION ZONE, 8 mm DIAMETER

New expansion zone provides for maximum strength of the fastener with a minimum workload and maintaining low equipment outlays.

Metal pin + head covered with plastic PA with glass fiber

ø8

WKTherm S-8
Length range: 95 - 295 mm

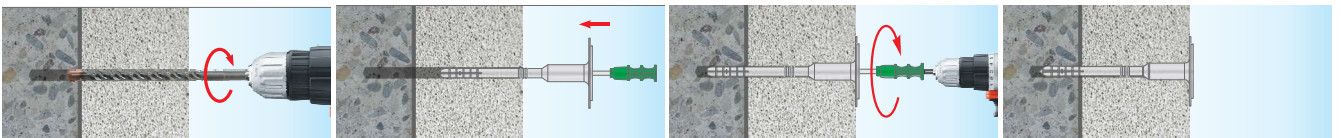


	Product code	Dimensions $d_k \times L_k$ [mm]	Insulation material thickness t_{fix} [mm]				Pack unit [pcs.]
			New buildings		Old buildings		
			t_{ad} adhesive layer of 10 mm		t_{ad} adhesive layer of 10 mm + 20 mm of old plaster		
			without cutter	with cutter	without cutter	with cutter	
WK THERM S-8							
Ø8	WK THERM-S-08095(200)	8x95	60/20*	80/40*	40/-*	60/20*	200
	WK THERM-S-08115(200)	8x115	80/40*	100/60*	60/20*	80/40*	200
	WK THERM-S-08135(200)	8x135	100/60*	120/80*	80/40*	100/60*	200
	WK THERM-S-08155(200)	8x155	120/80*	140/100*	100/60*	120/80*	200
	WK THERM-S-08175(200)	8x175	140/100*	160/120*	120/80*	140/100*	200
	WK THERM-S-08195(200)	8x195	160/120*	180/140*	140/100*	160/120*	200
	WK THERM-S-08215(100)	8x215	180/140*	200/160*	160/120*	180/140*	100
	WK THERM-S-08235(100)	8x235	200/160*	220/180*	180/140*	200/160*	100
	WK THERM-S-08255(100)	8x255	220/180*	240/200*	200/160*	220/180*	100
	WK THERM-S-08275(100)	8x275	240/200*	260/220*	220/180*	240/200*	100
	WK THERM-S-08295(100)	8x295	260/220*	280/240*	240/200*	260/220*	100

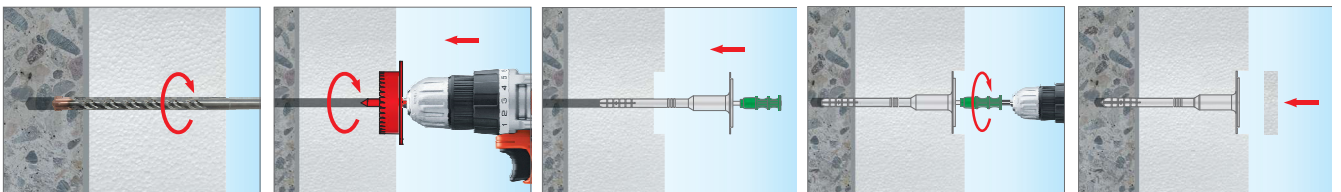
* - for substrate use category E (Autoclaved aerated concrete)

Product marking - WK THERM-S-08095(200)			
WK THERM-S	Ø8	095	(200)
Fastener type	Diameter	Length	Number of pieces in a box

INSTALLATION INSTRUCTIONS - surface mount



INSTALLATION INSTRUCTIONS - immersed mount with a polystyrene EPS disc (with plastic cutter)



AVAILABLE ACCESSORIES

SEE PAGE 69

Screwed-in fastener with metal pin and short expansion zone

WK THERM S-8 - TECHNICAL DATA

Ø8

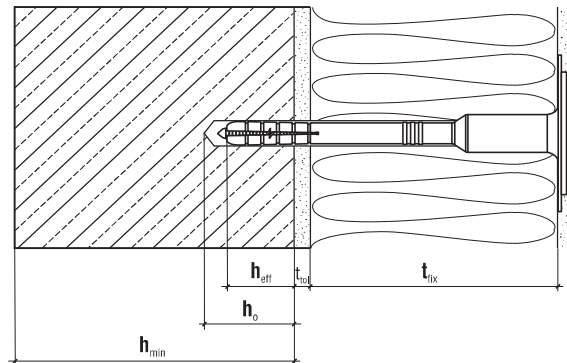


ETA-13/0724

TECHNICAL PARAMETERS

Parameter	Unit	Value	
Fastener diameter	d_k [mm]	8	
Collar diameter	D_k [mm]	60	
Effective anchorage depth	h_{eff} [mm]	25/65*	
Hole depth	h_o [mm]	35/75*	
Point thermal transmittance	χ [W/K]	surface mount	Immerged mount
		0,002	0,002
Collar stiffness	S [kN/mm]	0,60	
Substrate category	-	A B C D E	
Fastener material	-	PE	
Pin material	-	Carbon steel, head covered with plastic (PA+GF)	
European Technical Assessment	-	ETA-13/0724	

* - for substrate use category E (Autoclaved aerated concrete)



LOAD RESISTANCE

EAD 330196-01-0604 use cat.	Substrate	Density [kg/dm ³]	Characteristic pull-out resistance [kN]
A	Concrete C12/15	≥ 1,80	1,20
A	Concrete C16/20-C50/60	≥ 2,30	1,50
B	Solid clay bricks	≥ 2,00	1,50
B	Calcium silicate solid brick	≥ 2,00	1,50
C	Calcium silicate hollow blocks	≥ 1,60	0,90
C	Perforated solid brick	≥ 1,20	0,75
C	Lightweight concrete hollow block HBL	≥ 0,80	0,75
D	Lightweight aggregate concrete - LAC	≥ 1,05	0,90
E	Autoclaved aerated concrete AAC 2	≥ 0,35	0,60
E	Autoclaved aerated concrete AAC 7	≥ 0,65	1,20

INSTALLATION DATA

Fastener type	WK THERM-S 8
Min. substrate thickness h_{min} [mm]	100
Minimum fastener spacing L_{os} [mm]	100
Minimum edge distance C_{min} [mm]	100

Pull-trought test with insulation [kN]

R panel	EPS 035/60 mm	EPS 040/60 mm
	0,47 [kN]	0,47 [kN]

Partial safety factor for fastener resistance $\gamma_m = 2,0$ (valid in absence of national regulations)

Screwed-in fastener with metal pin and short expansion zone

WK THERM S-8 - INSTALLATION ACCESSORIES

ø8

Plastic cutter for polystyrene EPS

WK-FT diameter ø66.7 mm

Specifications:

- Plastic cutter for cutting holes in polystyrene EPS insulation material for insertion of polystyrene EPS disc.
- Controlled cutting depth, thrust collar with a diameter of 90 mm.



Metal cutter for mineral wool

WK-FM diameter ø64 mm

Specifications:

- Metal cutter for drilling of holes in mineral wool for immersed mount of fasteners.
- Controlled cutting depth, support collar of 95 mm in diameter.



Polystyrene disc (white, graphite)

KS, KSG dimensions ø67 x 17 mm

Specifications:

- Polystyrene disc (white, graphite) for covering up work holes in polystyrene - installation immersed mount.



Mineral wool disc

EDMW dimensions ø67 x 17 mm

Specifications:

- Mineral wool disc, density 130 kg/m³.

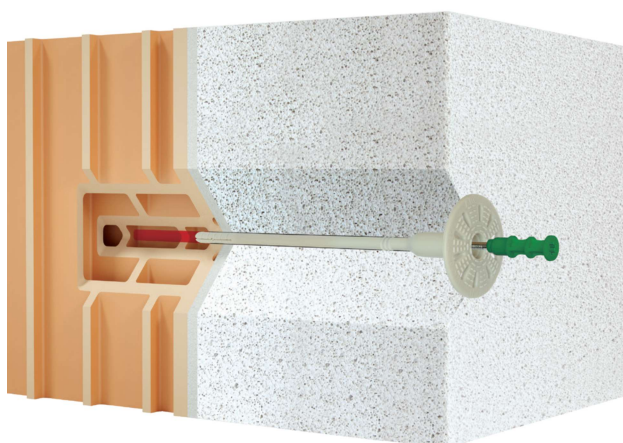
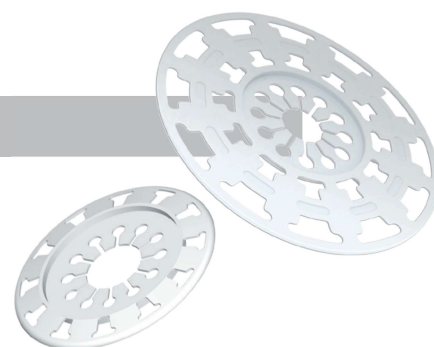


Additional collar

TDX-90, TDX-140 diameters ø90 mm, ø140 mm

Specifications:

- Additional collar with diameter of 90 or 140 mm for final securing touches in installation of mineral wool MW (including Lamella) - Fibreglass reinforced plastic.



ANCHORAGE DEPTH ONLY 25 mm*

Reduced drilling depth saves time and money. WK THERM fasteners offer substantial benefits. They also offer an innovative approach to thermal protection of buildings. WK THERM fasteners combine the features of metal and plastic pin fasteners.

*for substrate category ABCD; 65 mm for cat. E